



Not Just a Light
Weight Anymore!

Trail-Lite
Travel Trailers



Heated & Enclosed Underbelly



Trail-Lite Benefits

Super Light Weight

- Safe, easy, fuel efficient towing

Enclosed Undercarriage

- Improves fuel efficiency significantly, improves appearance, allows for much more interior storage space, better insulation and heated holding tanks. Corrosion free underbelly for effortless towing, low maintenance.

Laminated Aluminum Framed Construction

- Superior strength, light weight and exceptional durability

Aerodynamic Aluminum Front Storage Doors

- Protects LP bottles and battery. Adds exterior storage.

Lower Center of Gravity

- Stable, safe towing with today's down sized tow vehicles.

Works in the Basement

- Water tank, holding tanks, and heat ducts located under floor in the "Basement" providing for warm floors, more inside storage space, and low center of gravity.

Independent Torsion Suspension System with Radial Tires

- Unsurpassed towing stability with EZ-Lub™ hubs

Crowned Rubber Roof

- Run-off for water

One-Piece Steel Chassis (Clean-Bond)

- Not bolted together, welded for extra strength

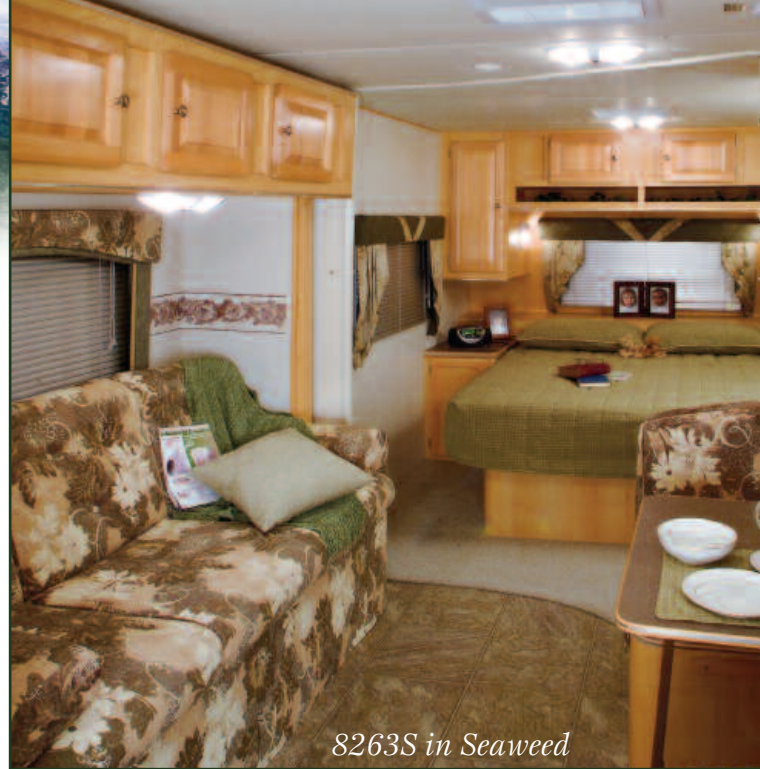
Full Tub with 6'5" Interior Height

- Best headroom in light weight industry

6'6" Interior Height

- Spacious feeling

Ducted Air Conditioning on All Models

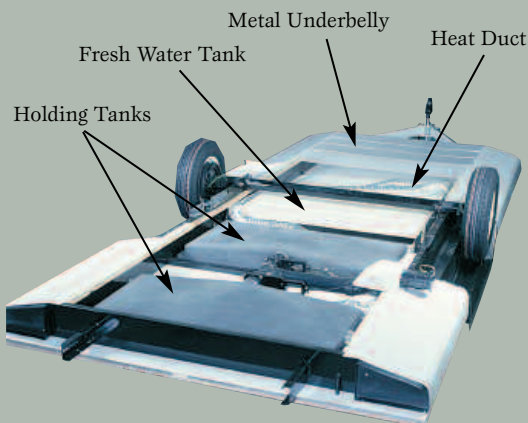


8263S in Seaweed



8306S

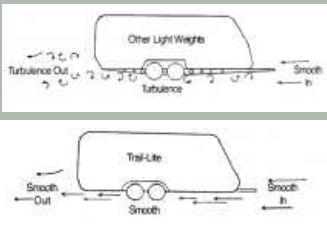
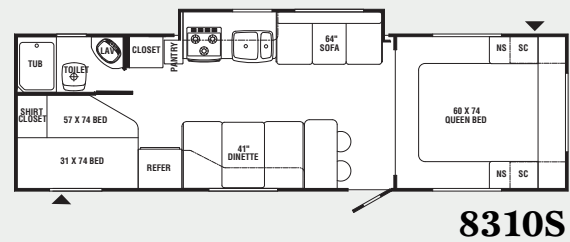
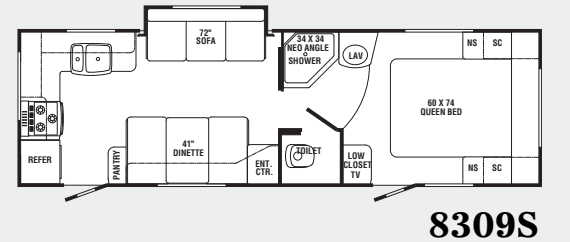
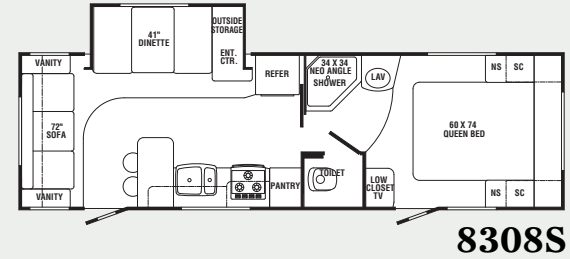
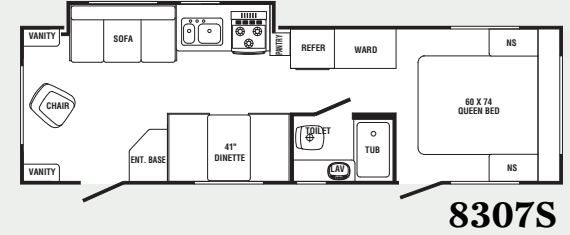
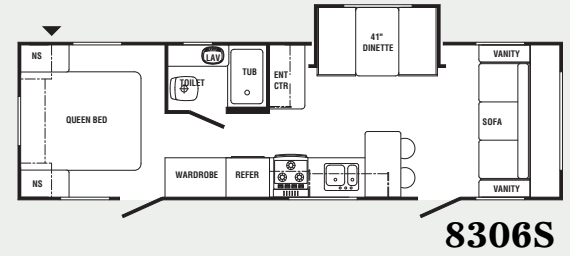
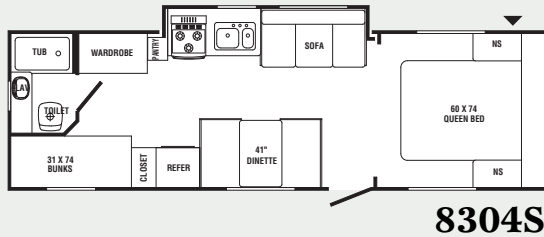
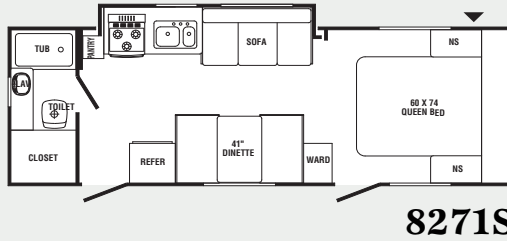
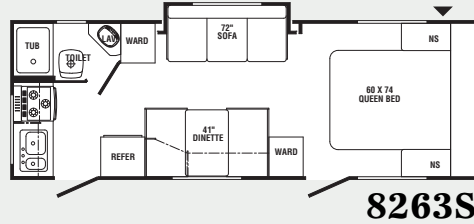
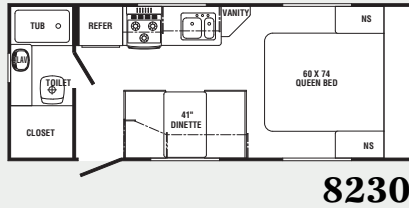
Enclosed Heated Undercarriage



8306S in Chepstow



Floor Plans



Trail-Lite uses modern race car technology to bring you towing ease and stability. Trail-Lite's enclosed chassis is clear of the exposed holding tanks, crossmembers and outriggers that create turbulence when the trailer is towed. Airflow is smooth and drag is greatly reduced. Towing a Trail-Lite is a breeze!



Chepstow



Blueberry



Seaweed



Cranberry

▲ Utility Storage Door

▼ Pass-Thru Storage

	8230	8263S	8271S	8304S	8306S	8307S	8308S	8309S	8310S
Length	23'7"	26'8"	28'5"	31'2"	30'9"	30'10"	30'9"	29'8"	31'6"
Width (w/o Awning)	96"	96"	96"	96"	96"	96"	96"	96"	96"
Height (w/AC)	10'	10'	10'	10'	10'	10'	10'	10'	10'
Awning Length	15'	18'	19'	19'	20'	20'	20'	20'	20'
*Hitch Dry Wt. (Appr.)	338	315	408	412	640	445	436	486	620
*Axle Dry Wt. (Appr.)	3532	4154	4326	4434	4440	4738	4844	4482	4382
Total Dry Wt.	3870	4469	4734	4846	5080	5183	5280	4968	5002
Load Cap.	3468	2846	2674	2566	2560	2262	2156	2518	2618
Tire Size	205/75R14	205/75R14	205/75R14	205/75R14	205/75R14	205/75R14	205/75R14	205/75R14	205/75R14
Fresh Water Tank Cap.	30	30	30	30	30	30	30	30	30
Grey Water Cap.	30	30	30	30	30	30	30	30	30
Black Water Cap.	30	30	30	30	30	30	30	30	30

*Weights are approximate and based on standard features, optional equipment not included.

